

innuos



ZENMINI Mk3 Quick Start Guide

Thank you for buying our ZENmini Music Server.

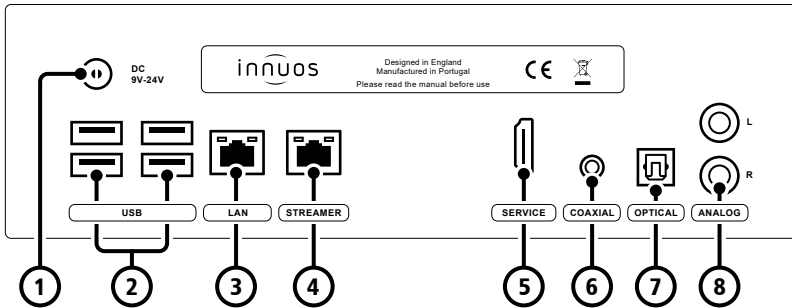
This quick start guide will show you how to get started with your new Music Server.

For more detailed information please visit our website <https://innuos.com/support/>

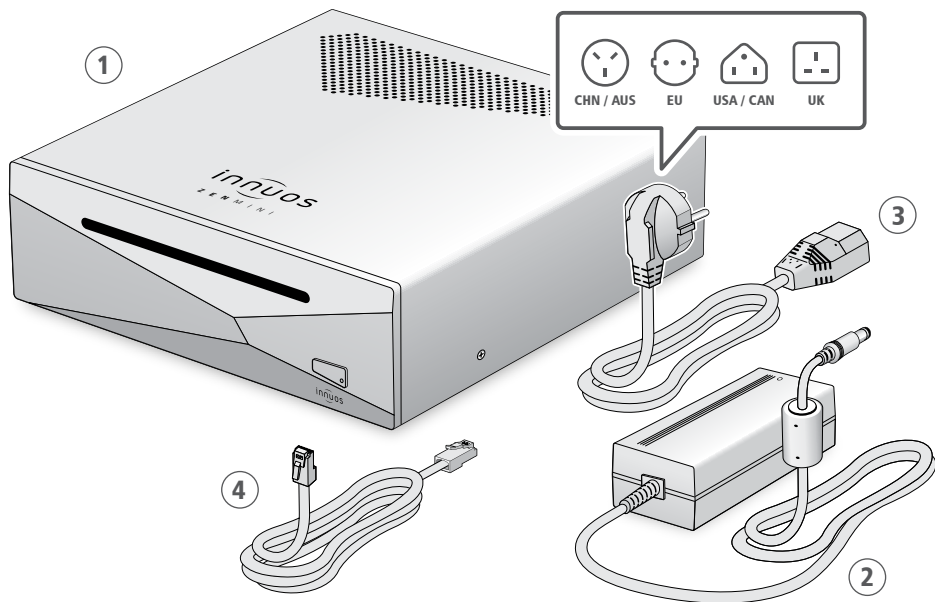
Should you have problems please contact support@innuos.com and we'll be happy to assist you.

Contents

1	ZENmini Mk3 Rear Panel Diagram	3
2	Box Contents	4
3	Connect your ZENmini to Mains Power	5
4	Connect your ZENmini to your Home Network	6
5	Connect Network Audio Device to Streamer Port	7
6	Using your ZENmini as a Player	8
7	Turn on your ZENmini	12
8	Accessing your Innuos Device	13
9	Update innuOS Software to the Latest Version	14
10	Adding Music to your ZENmini	15
11	Streaming Services and Integrations	17



- | | | | |
|---|----------------------------|---|----------------------------|
| 1 | DC Power Connector | 5 | HDMI Output (Service Only) |
| 2 | 4 x USB 3.0 | 6 | Digital Coaxial Output |
| 3 | Ethernet Input from Router | 7 | Digital Optical Output |
| 4 | Ethernet Streamer Output | 8 | Analog RCA Output |



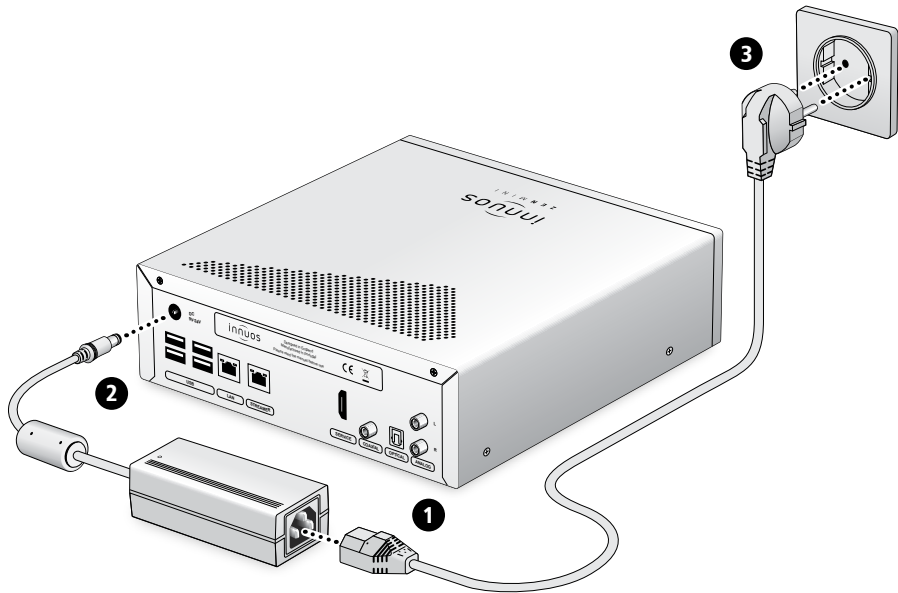
① Innuos ZENmini Mk3 Music Server

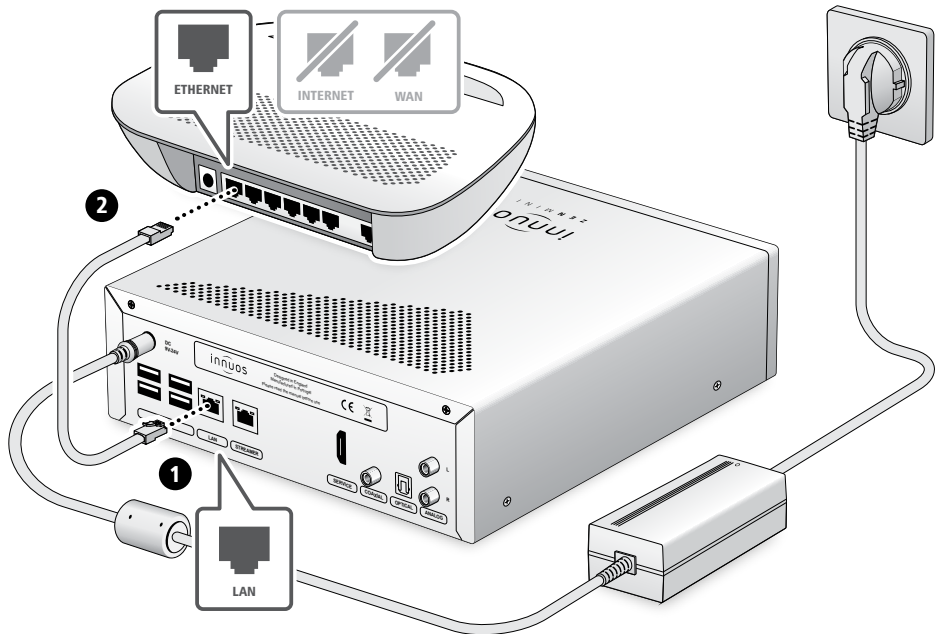
② AC/DC Power Adapter

③ Mains Cable

④ 2m Ethernet Cable

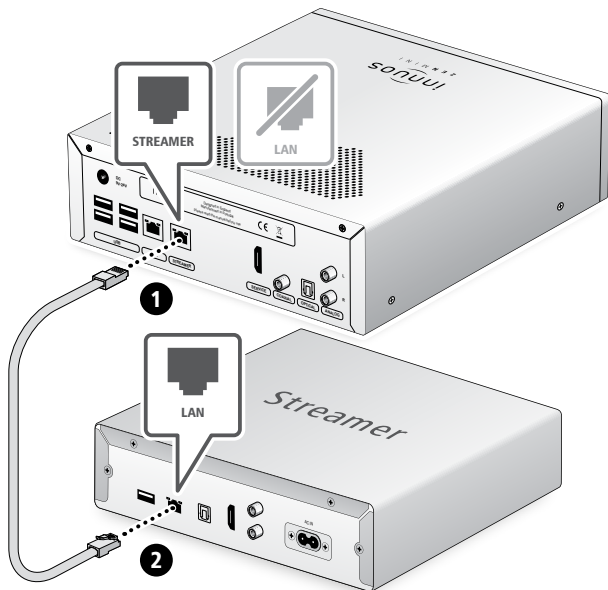
3 Connect your ZENmini to Mains Power



OPTION A Wired to the Internet Router

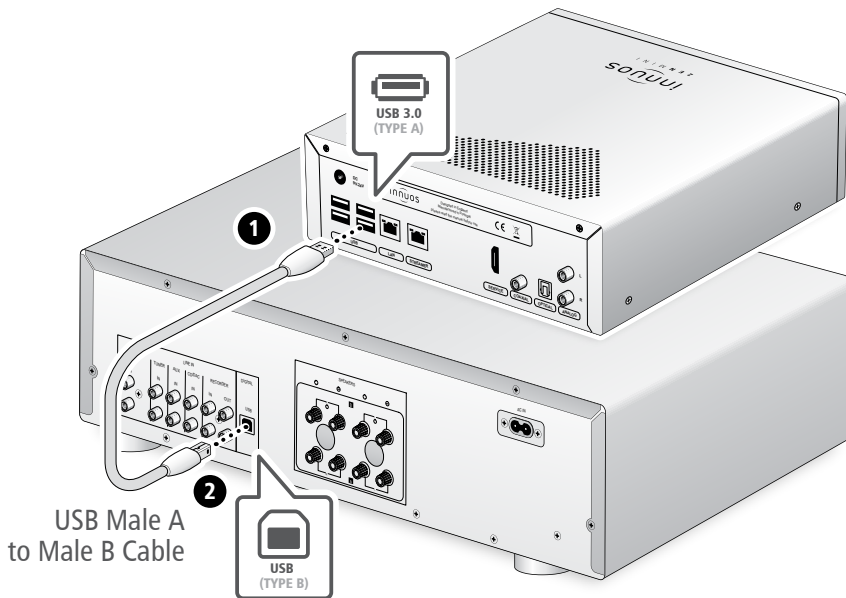
NOTE

Optional - Not required for server operation



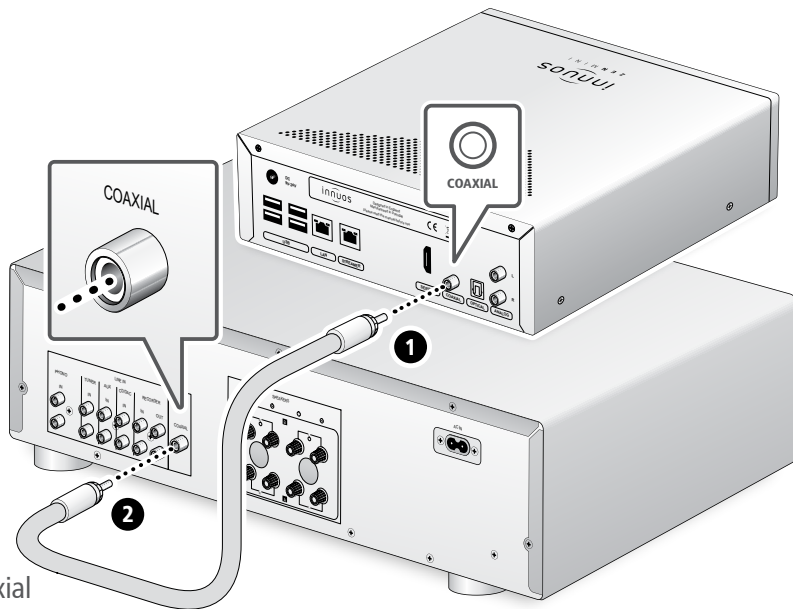
Ethernet Cable

The Streamer Port provides a wired network connection for streamers, wireless speakers and other network audio products.

SETUP A Connect to a DAC/Amplifier via USB

Note: USB Cable not included. Requires DAC compatible with USB Audio Class 2.

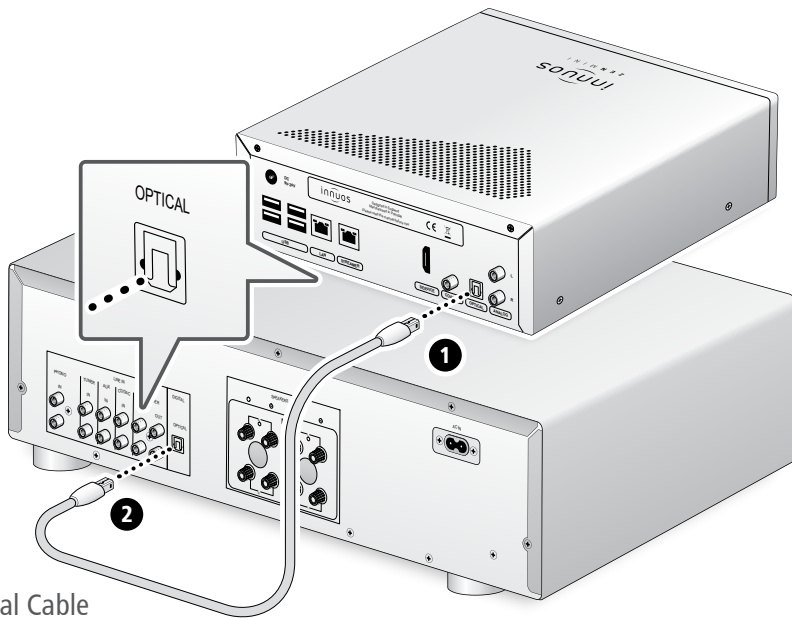
SETUP B Connect to a DAC/Amplifier via Coaxial Cable



Coaxial
Cable

Note: Coaxial Cable not included.

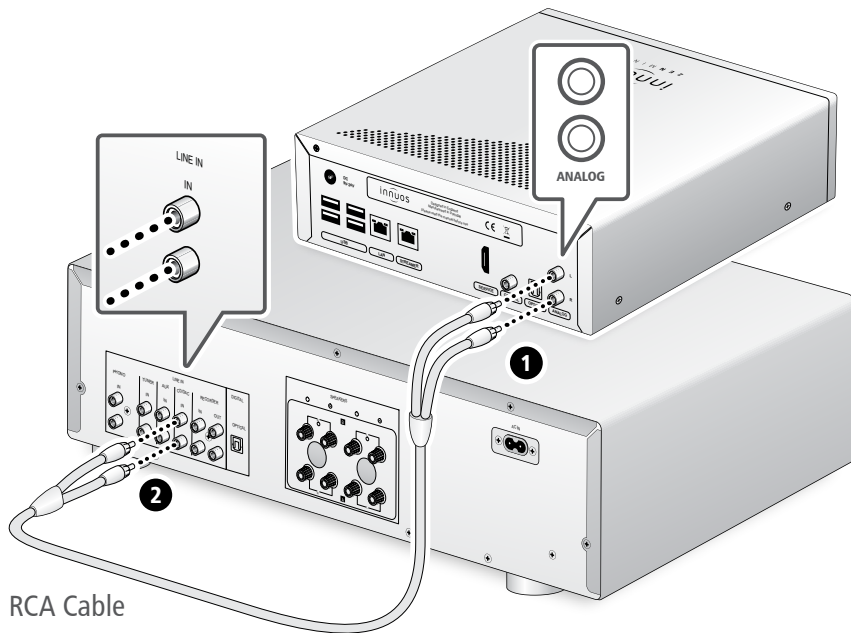
SETUP C Connect to a DAC/Amplifier via Optical Cable



Optical Cable

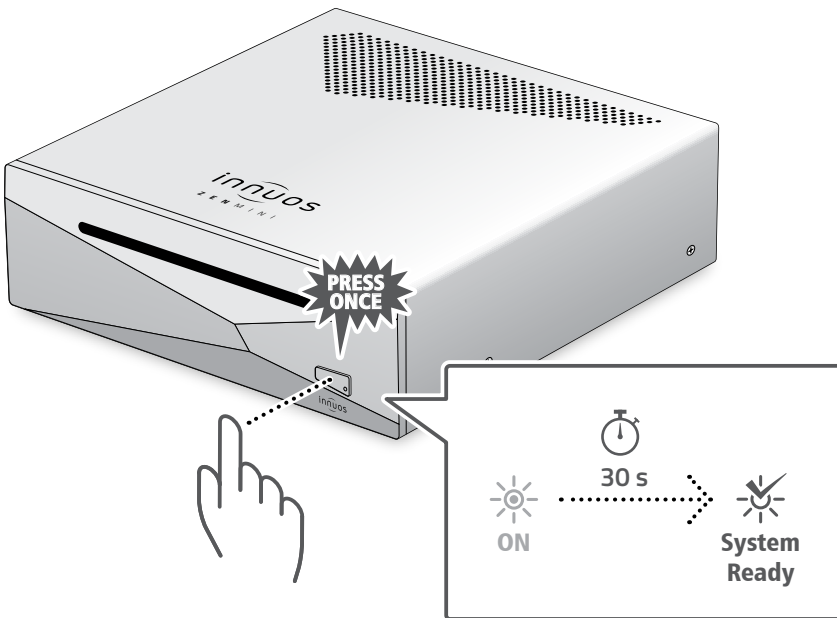
Note: Optical Cable not included.

SETUP D Connect to Amplifier via Analog Cable



RCA Cable

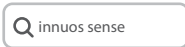
Note: RCA Analog Cable not included.



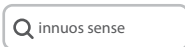
Please press and release. Do not hold the front power button down.



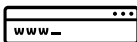
iPhone / iPad

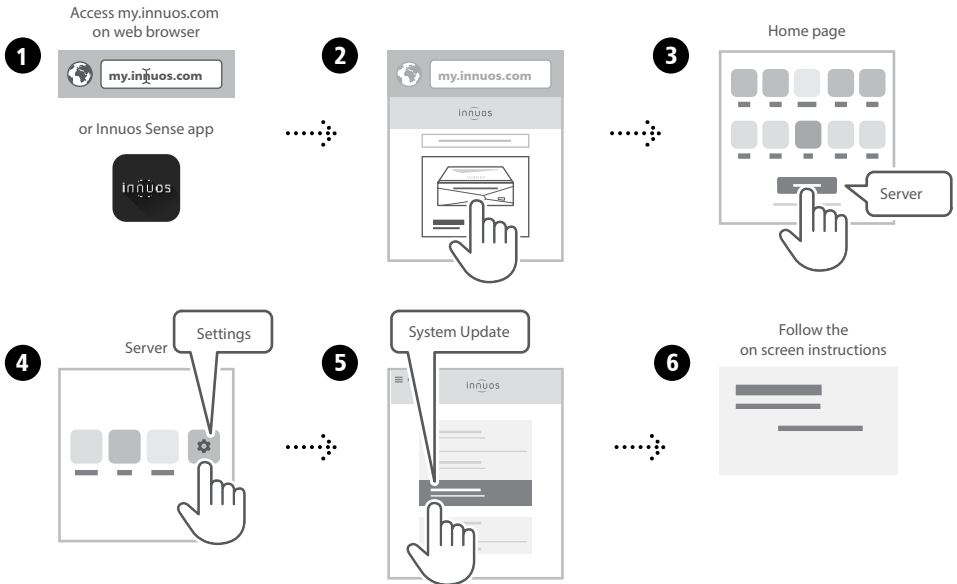


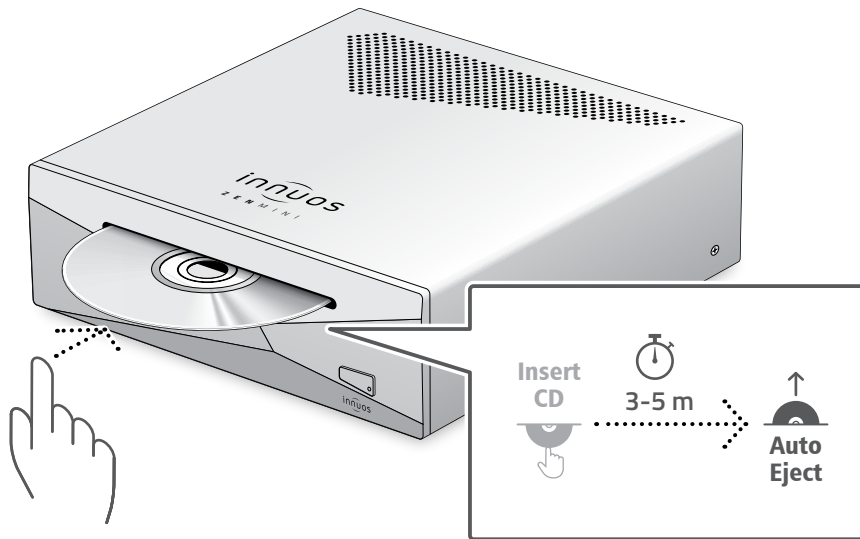
Android



Desktop

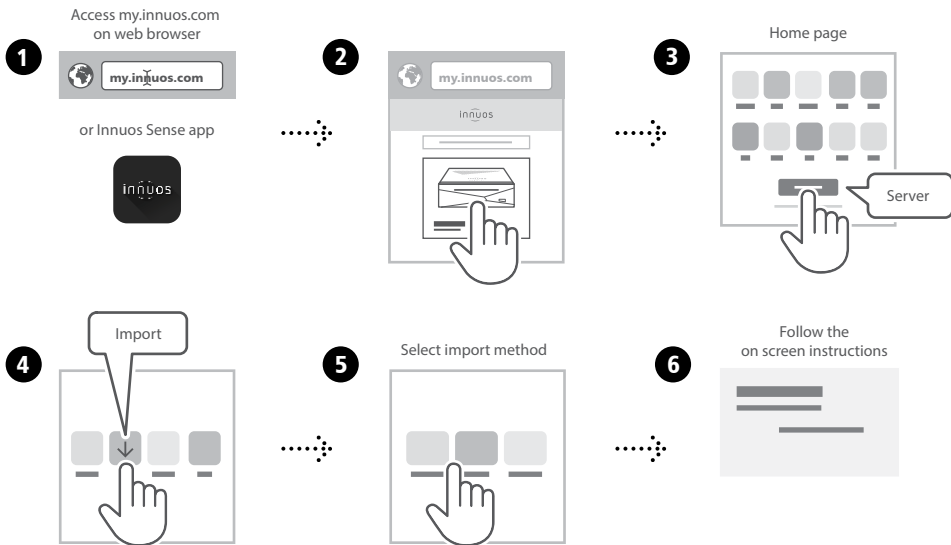


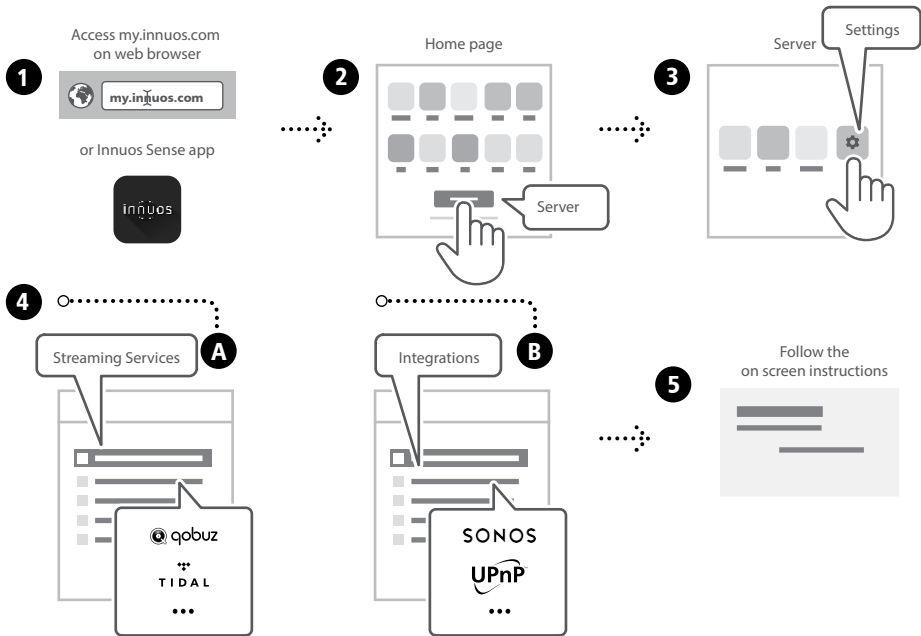


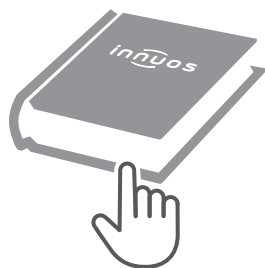
OPTION A Rip CDs

Do not push the CD while it is being drawn in as this may cause it to jam or damage the optical drive.

OPTION B Import Digital Music







For more information and for the latest version of this quick start guide please visit:

innuos.com/support