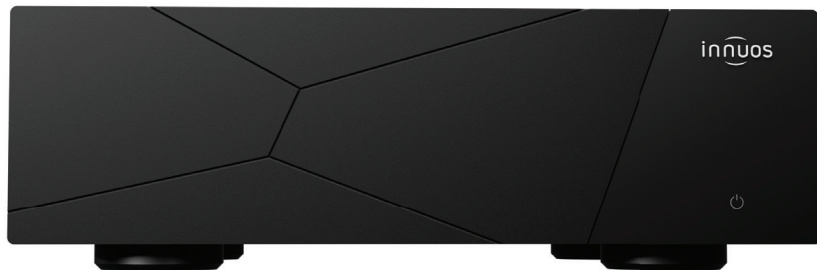




# STREAM1

MUSIC STREAMER | SERVER



Quick Start Guide

Thank you for buying our **STREAM1** and welcome to the Innuos family!

To get started download the Innuos **Sense** app at the following stores:

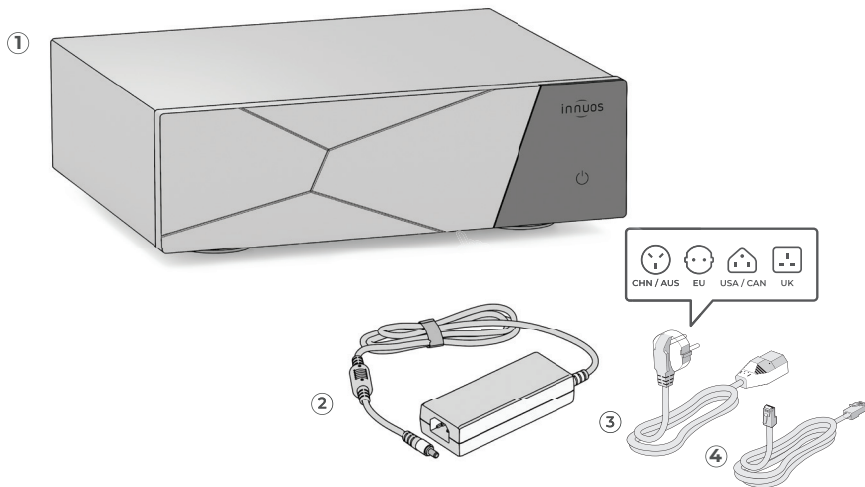


You can also access Innuos **Sense** using a modern web browser at the following address: **[my.innuos.com](https://my.innuos.com)**

This **Quick Start Guide** will show you how to get started with your new music streamer | server. For further details, troubleshooting and help with advanced setups, visit our support page at **[innuos.com/support](https://innuos.com/support)**.

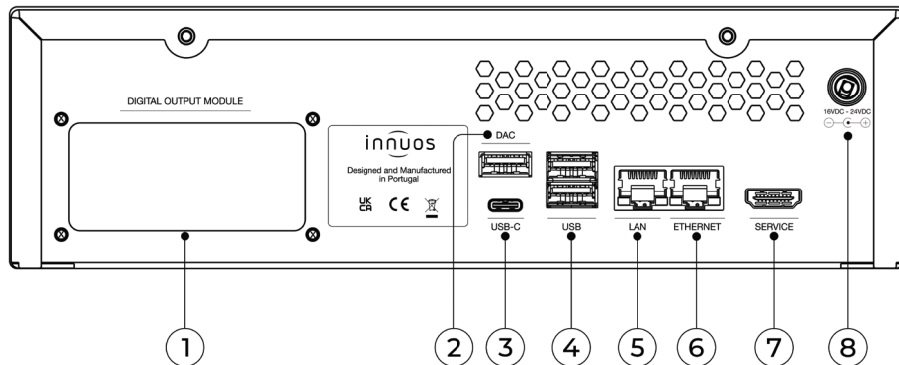
Enjoy the music  
**-The Innuos Team**

## Box Contents



- 1. STREAM1
- 2. AC/DC Adapter
- 3. 1.75m Mains Power Cable
- 4. 2m Ethernet Cable

# STREAM1 Rear Panel Diagram



## 1. Digital Output Module Bay

For optional StandardDAC / PerformanceDAC / SPDIF / PhoenixUSB Boards

## 2. USB DAC

Connection to DAC via USB

## 3. USB-C

USB3.2 Gen1 for USB-C drives

## 4. USB

2x USB 3.2 Gen2 for USB optical drive and USB drives

## 5. LAN

Network connection to router

## 6. Ethernet

Bridged network port to connect a streamer or NAS

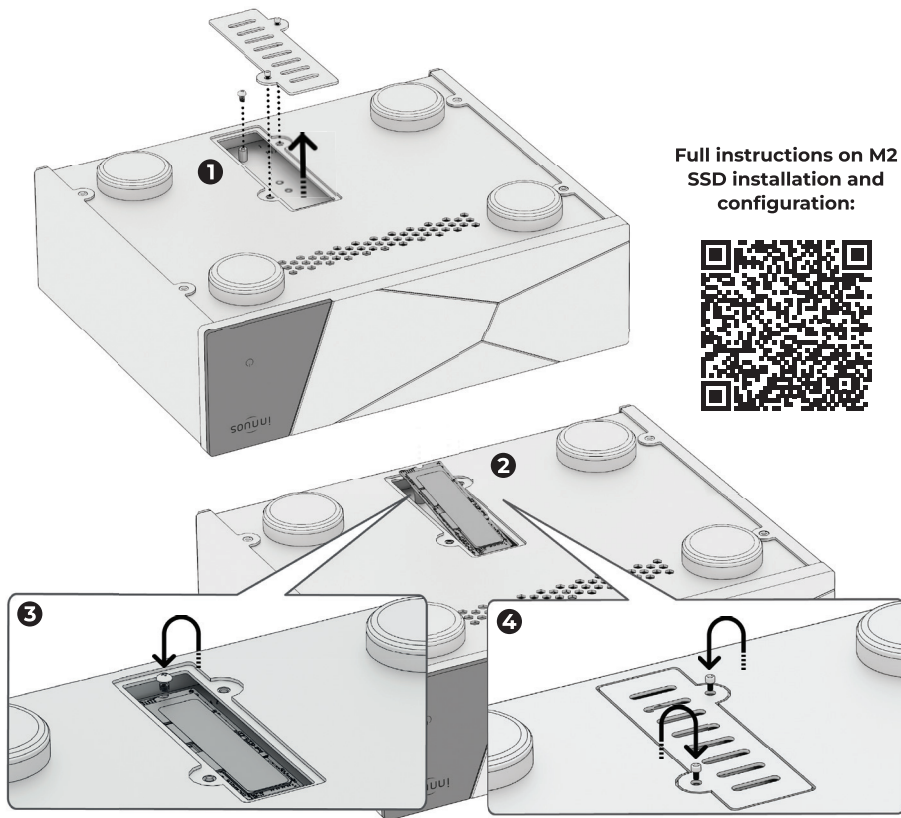
## 7. HDMI

For technical service only

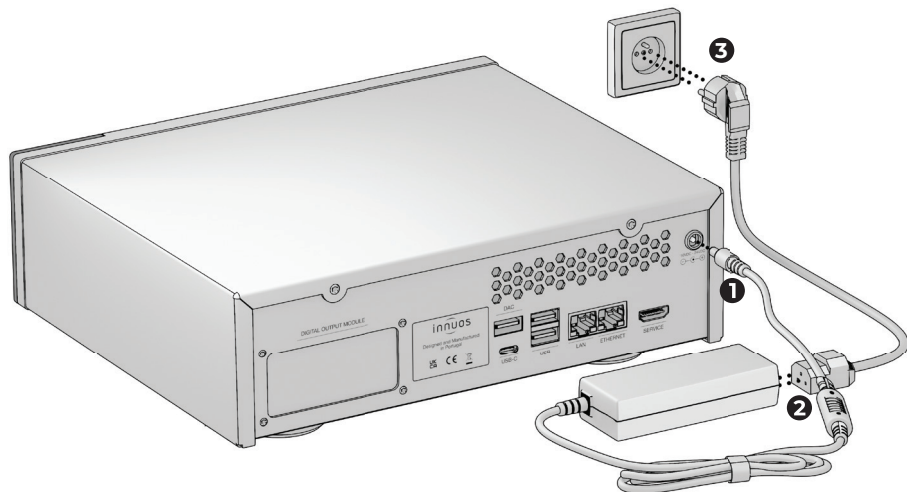
## 8. DC Power Socket

For connection of AC/DC adapter or optional LPS1 power supply upgrade

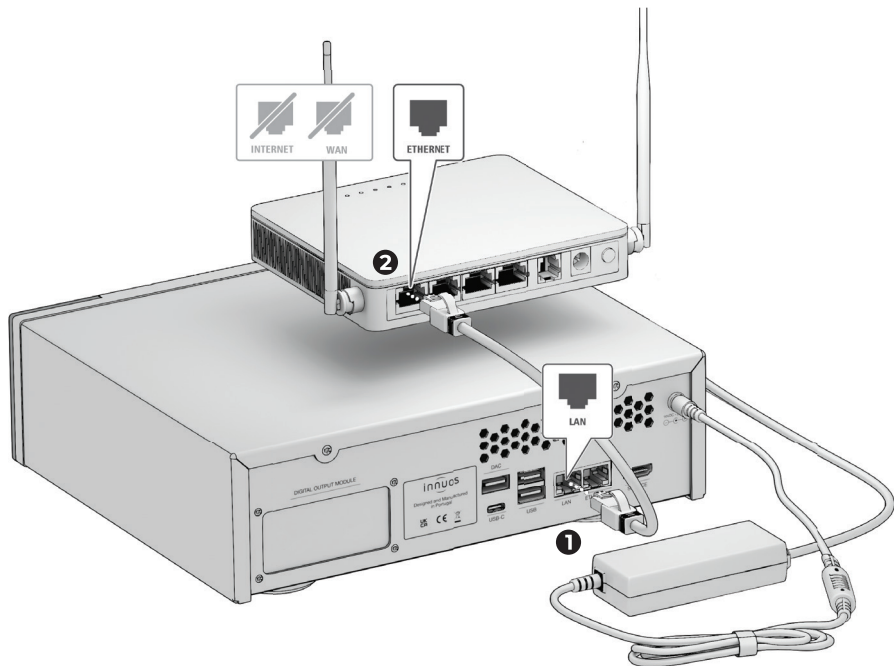
## Installation of M2 SSD (optional)



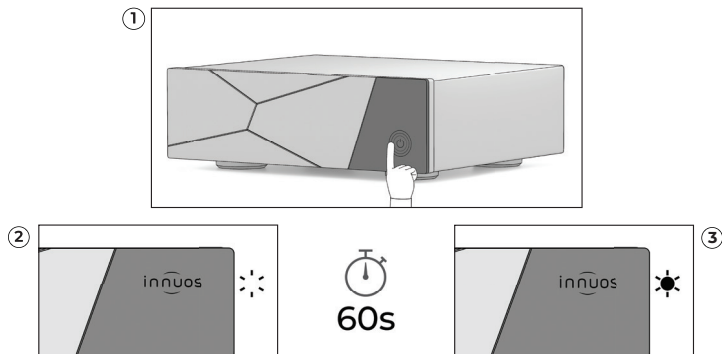
## Connect your system to mains power



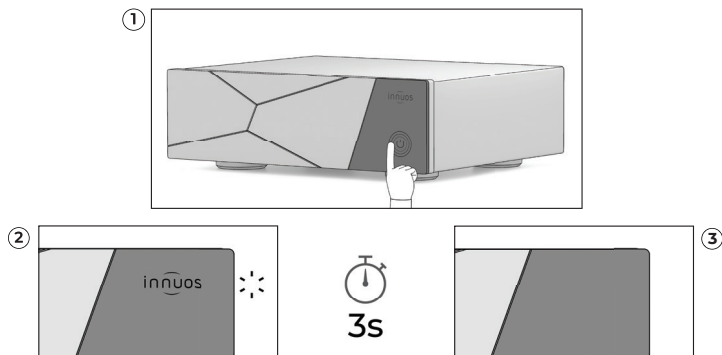
## Connecting to home network



## Turning the STREAM1 ON



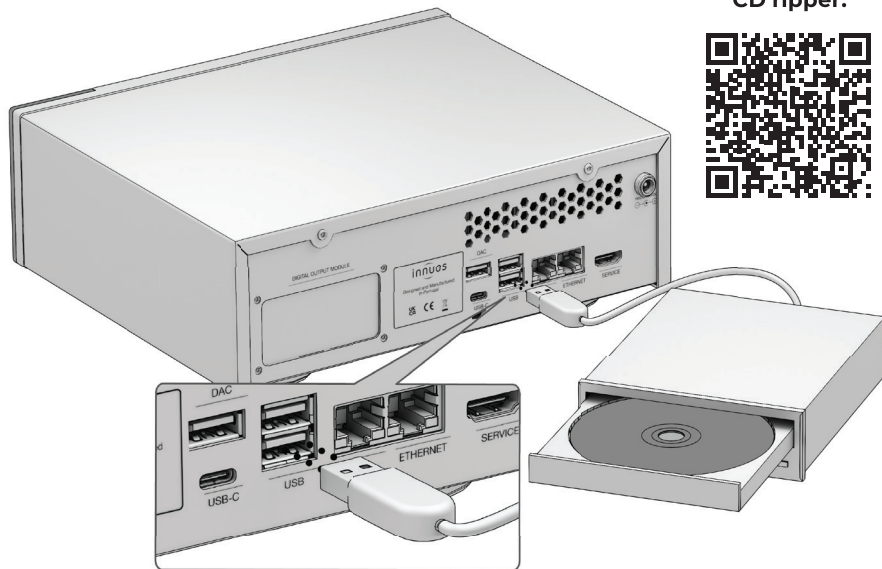
## Turning the STREAM1 OFF





## Connecting external USB CD ripper (optional)

Full instructions on  
using an external  
CD ripper:



*Note: An M.2 SSD must be installed to enable CD ripping functionality.*

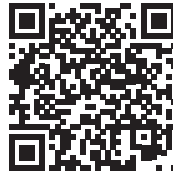
## **Updating Your System**

How to update the  
Sense software



## **Add Music Sources**

How to add music files  
and streaming services



## **System Migration**

How to transfer from a  
previous Innuos system



## **System Modes**

Explanation of different  
Innuos system modes





At Innuos, we appreciate your feedback. Once you download and start using our Sense app, we encourage you to register on our Community Forum at **[community.innuos.com](https://community.innuos.com)** where you can join the conversation with Innuos specialists and other Innuos users to get the most from your system.

Join us on social media to keep informed about events, new features and products here:



[instagram.com/innuos](https://www.instagram.com/innuos)



[x.com/innuos](https://x.com/innuos)



[youtube.com/innuos](https://www.youtube.com/innuos)



[facebook.com/innuos](https://www.facebook.com/innuos)

innuos